



Disadvantaged Business Enterprises

August 2017 Newsletter

How will we fix roads, bridges?

[Jim Beam](#) – August 3, 2017

Most motorists and those who use other forms of travel seem to agree a majority of the nation’s highways, bridges, airports and railways are in terrible shape. Louisiana’s roads and bridges have been neglected for too many years, but taxpayers and legislators have refused to raise the construction and maintenance revenues needed.

The Pew Charitable Trusts in a news report said state spending on highways and transit fell by 15 percent between 2002 and 2012. The national backlog of highway and bridge projects now totals \$800 billion. That translates to 1 in 5 miles of highway in poor condition and construction costs are rising at the same time.

People in this part of the state know how much a new Interstate 10 bridge over the Calcasieu River is needed, but the odds of getting one appear to be slim to none. It isn’t even listed among the \$13 billion highway and bridge construction and maintenance backlog in Louisiana.

The bridge is part of another \$16 billion needed for major road and bridge construction, some of which could have been done had the Legislature raised the gasoline tax. The other biggie is a new bridge at Baton Rouge, home of one of the worst daily traffic nightmares in the country.

Local motorists are being encouraged to attend a special meeting about a new bridge here that is taking place from 5 to 8 p.m. today in the Buccaneer Room in the Lake Charles Civic Center. Federal and state highway officials want some bridge feedback from citizens.

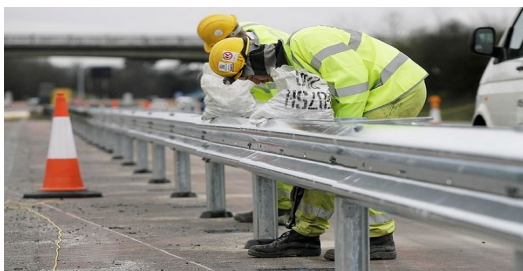
State Rep. Steve Carter, R-Baton Rouge, knows the capital city bridge problem better than most, and that is one reason he sponsored a gasoline tax increase at the last legislative session. He never brought it to a House vote, saying he was about 10 votes short of the 70 (two-thirds) needed.

The tax would have raised over \$500 million annually, but taxpayers made it clear they wanted no part of it. They seem willing instead to pay hundreds more on vehicle repairs and for new tires because of wear and tear caused by terrible roads and bridges.



Contact:

LADOTD Compliance Office
1201 Capitol Access Road
Baton Rouge, LA 70802
(225) 379-1382



In This Issue

- Page 3 DBE Survey
- Page 4 LED Small Business Resources
- Page 5 Mayor Broome’s Tax Plan
- Page 6 Safety Article
- Page 9 Events/Workshops
- Page 17 LADOTD Lettings
- Page 24 LADOTD Letting Results
- Page 27 Featured DBE
- Page 28 DOTD Safe Travel Article
- Page 29 Newly DBE Certified Firms
- Page 30 LADOTD Contact Information
- Page 30 SJB Group DBE Supportive Services

The situation was similar in 26 other states, but they decided over the last four years to increase their gasoline taxes. Three of them had to lower other taxes to sell the increase. Louisiana is facing a billion-dollar deficit next July and doesn't have any extra revenues with which to bargain.

A higher gasoline tax is essential for a couple of reasons. Inflation has made 16 cents of the state's 20-cent state gasoline tax worth about 7 cents in today's dollars. The other 4 cents is dedicated to paying for earlier highway improvements.

States are also finding out that today's cars are more fuel efficient and that reduces gasoline consumption and the taxes gasoline sales produce.

Since Louisiana legislators didn't want to raise gasoline taxes, Carter said some general fund money should be spent on roads and bridges. He also thinks the state constitution should be amended so parishes and the state could join forces to build new roads and bridges.

Carter said Democratic Gov. John Bel Edwards could have done more to promote the gasoline tax increase. However, the governor knows Republican lawmakers are calling the shots and they won't give him the time of day.

The situation is different in other parts of the country. South Carolina raised its gasoline tax by 12 cents over six years and increased other vehicle fees. The Legislature also overrode the governor when he vetoed the gasoline tax increase.

The South Carolina increase would raise about \$180 million in its first year and over \$700 million in 2024. Its transportation department said it would need \$11 billion to repair every substandard road in the state.

A senior policy analyst with Tax Foundation said, "We've seen more bipartisan agreement on raising gas taxes than almost any other tax out there."

Since gasoline taxes are a declining source of revenue, some states are looking at establishing VMT (vehicle miles traveled) taxes. There are a number of ways to administer such a tax.

Unfortunately, there are no easy answers, but some have to be found. The longer roads and bridges are neglected the more the maintenance costs.

Chambers of Commerce, automobile clubs, construction companies and unions have helped convince lawmakers in some states to raise gasoline taxes. The tax Rep. Carter was sponsoring had support from three dozen such organizations, but he couldn't muster the votes needed.

The Carter measure made it clear how the road money would be spent, which has been a major selling point in other states. However, it didn't help in Louisiana. Something has to give, but what and whether it could or might happen is anybody's guess.

American Press

*** A SHEARMAN FAMILY PUBLICATION | ESTABLISHED 1895 ***



Dear DBE Firm:

The Disadvantaged Business Enterprise (DBE) Program is designed to ensure that small minority and women-owned businesses are able to compete on an equal basis for contracting opportunities within the transportation industry.

Please take a few moments to complete the survey below in order to properly identify areas of concern. Your assistance will aid in creating common solutions and increase contracting opportunities for all. **Please circle the areas of assistance you are interested in being provided.**

Business Name: _____

Business Address: _____

Business Email: _____

Business Phone No.: _____ Specialty Areas: _____

Do you actively quote LADOTD projects? Yes No

If not, why? _____

Do you bid primarily as a: prime contractor or sub-contractor

Are you interested in becoming a prime contractor? Yes No

Have you ever received a LADOTD job? Yes No

Do you plan to actively bid LADOTD work in the future? Yes No

If not, why: _____

Are there any barriers you see to quoting LADOTD jobs? Yes No

If yes, please explain: _____

If barriers listed, what do you see as ways to overcome those barriers?

Accounting & Record Keeping

- Financial Analysis

Job Cost Control

- Preparing Budgets

Financial Assistance

- Cash Flow/Working Capital
- Loan & Bond Packaging

Scheduling & Planning

- Plans & Specs
- Project Scheduling
- Labor/Bar Chart
- Material Delivery
- Estimating/Bidding

Business Management

- Business Planning
- Project Management

Marketing

- Marketing Strategies
- Marketing Plan

Legal

- Contract Negotiations
- Delay Contract
- Construction Lien Law

Contract Compliance

- Federal/State Compliance
- EEO/Affirmative Action

Contract Compliance

- Hardware/Software

Please complete and return to SJB Group, LLC

Email: jackie.desbordes@sibgroup.com

Mail: P.O. Box 1751, Baton Rouge, LA 70821-1751

Fax: 225-769-3596

Small Business Resources available through Louisiana Economic Development

The [Small and Emerging Business Development Program](#) provides managerial and technical training and one-on-one assistance to help small businesses sustain and grow.

The [Louisiana Contractors Accreditation Institute](#) is a six week course that offers small and emerging construction businesses critical information about construction management and assists with preparing for the business and law portion of the contractors licensing exam.

The [Bonding Assistance Program](#) provides guarantees for bid, payment and performance bonds at reasonable rates that mitigate risk for the surety company and help small businesses build or expand their bonding capacity.

The [Hudson Initiative](#) provides a small business certification that expands opportunities with State contracts and procurement.

The [Veteran Initiative](#) provides a veteran owned and service connected disabled veteran owned small business certification that expands opportunities with State contracts and procurement.

[Economic Gardening](#) connects growth companies to a team of highly skilled research specialists that provide customized information to address a company's specific growth challenges in areas including market research, geographic information systems, and digital marketing.

[CEO Roundtables](#) bring together key decision makers from growth companies 10 times over the course of a year for collaborative, growth-oriented roundtable sessions that support a trusting environment in which they can safely explore business and personal issues with the guidance of experienced facilitators.

[Louisiana Business Connection](#) is a portal designed to connect major business projects with disadvantaged business enterprises, minority-owned businesses, woman-owned businesses, veteran-owned businesses, and the other small businesses of Louisiana to promote growth and inclusiveness in the state. – Large and small businesses operating in Louisiana may register at no cost and discover contract opportunities.

You can visit the highlighted links by pressing “Control” on your keypad and clicking on the link.

If you would like more information about each programs please feel free to contact Ms. Stephanie Hartman, the LED Small Business Services Manager, at (225) 342-5677 or Stephanie.Hartman@la.gov

Business Report' Publisher: The politics of Broome's tax plan

As Mayor Sharon Weston Broome tries to sell a new 5-mill property tax for transportation projects that's similar to last year's failed Green Light Plan II proposal, *Business Report* Publisher Rolfe McCollister says the details of where the money would be spent will be most important to voters and Metro Council members—who must approve putting it on the November ballot.

“But success the second time around may not depend on how many TV commercials or ads run, paid for by engineers and contractors, that will tell citizens how voting ‘yes’ will make all the traffic go away,” McCollister writes in his latest column. “Many are predicting other factors could spell trouble for the tax.”

First, McCollister says, the public is angry at the lack of performance of government in general—from Baton Rouge to Washington, D.C.—and most feel they pay enough taxes. Second, he asks, how do we know this plan will fix our traffic woes?

“The city-parish government has let politics—and dimwits—screw up our master plan and street grid for decades, while offering little more than excuses,” he writes. “Now they want us to pay for their mistakes and misdeeds.”

He is critical of Transportation and Drainage Director Fred Raiford for his comments on traffic signal synchronization to *The Advocate*, where he said, “I don't know why we didn't do this sooner.” McCollister points out that Raiford was in city-parish government for decades and headed DPW—and now he is back in charge to fix the problem.

McCollister also believes there will be some factors affecting the vote that have nothing to do with traffic woes.

“Voters often make a decision based on emotions, and emotions are running high. Matters that loom large include the EBR Council on Aging fiasco, where many taxpayers feel they got screwed after passing a new \$8 million property tax—and the mayor and seven members of the Metro Council did nothing to fix it,” he says, adding the recent retirement of Police Chief Carl Dabadie may also have an impact.

Also in his new column, McCollister notes that with Baton Rouge's growth over the past 10 to 15 years has come the need for more roads and services—but it also generated more tax dollars.

“I looked back at city-parish budget totals and found the total budget in 2003 was \$529 million versus a 2017 total of \$887 million—a 67.7% increase over 14 years,” he writes. “But what about inflation? Well, the inflation calculator says \$529 million would be \$703 million today, and that would assume every city-parish employee got a raise annually to keep up with inflation and every product and service bought increased as well.”

Regardless McCollister says, even at \$703 million, that equals a net increase of \$184 million a year spent by government.

“On what? That's a 26.2% increase over inflation. Did we grow that much in size? Well, U.S. Census data says the parish population was 411,473 in 2003 and 446,753 in 2015 (35,000 more people, or an 8.6% increase),” he writes. “So our actual increase in city-parish spending (adjusted for inflation) was 26.2% for a population increase of only 8.6%. You do the math. Did I miss something?”

[Read the full column](#), in which McCollister also comments on the one-year anniversary of last August's devastating floods and the upcoming [Capital City Restaurant Week](#) on August 14-20. Send your comments to editors@businessreport.com.

Occupational Heat Exposure

Many people are exposed to heat on the job, outdoors or in hot indoor environments. Operations involving high air temperatures, radiant heat sources, high humidity, direct physical contact with hot objects, or strenuous physical activities have a high potential for causing heat-related illness. Workplaces with these conditions may include iron and steel foundries, nonferrous foundries, brick-firing and ceramic plants, glass products facilities, rubber products factories, electrical utilities (particularly boiler rooms), bakeries, confectioneries, commercial kitchens, laundries, food canneries, chemical plants, mining sites, smelters, and steam tunnels.

Outdoor operations conducted in hot weather and direct sun, such as farm work, construction, oil and gas well operations, asbestos removal, landscaping, emergency response operations, and hazardous waste site activities, also increase the risk of heat-related illness in exposed workers.

Every year, thousands of workers become sick from occupational heat exposure, and [some even die](#). **These illnesses and deaths are preventable.**

[Why is heat a hazard to workers?](#)

[Who could be affected by heat?](#)

[How do I know if it's too hot?](#)

[How can heat-related illness be prevented?](#)

[How do I find out about employer responsibilities and worker rights?](#)

Why is heat a hazard to workers?

When a person works in a hot environment, the body must get rid of excess heat to maintain a stable internal temperature. It does this mainly through circulating blood to the skin and through sweating.



When the air temperature is close to or warmer than normal body temperature, cooling of the body becomes more difficult. Blood circulated to the skin cannot lose its heat. Sweating then becomes the main way the body cools off. But sweating is effective only if the humidity level is low enough to allow evaporation, and if the fluids and salts that are lost are adequately replaced.

If the body cannot get rid of excess heat, it will store it. When this happens, the body's core temperature rises and the heart rate increases. As the body continues to store heat, the person begins to lose concentration and has difficulty focusing on a task, may become irritable or sick, and often loses the desire to drink. The next stage is most often fainting and even death if the person is not cooled down.

Excessive exposure to heat can cause a range of [heat-related illnesses](#), from heat rash and heat cramps to heat exhaustion and heat stroke. Heat stroke can result in death and requires **immediate medical attention**.

Exposure to heat can also increase the risk of injuries because of sweaty palms, fogged-up safety glasses, dizziness, and burns from hot surfaces or steam.

> > [Go to Heat-Related Illnesses and First Aid](#)

Who could be affected by heat?

Workers exposed to hot indoor environments or hot and humid conditions outdoors are at risk of heat-related illness, especially those doing heavy work tasks or using bulky or non-breathable protective clothing and equipment. Some workers might be at greater risk than others if they have not built up a tolerance to hot conditions, or if they have certain health conditions. The table below shows some environmental and job-specific factors that increase the risk of heat-related illness.

Factors That Put Workers at Greater Risk

Environmental	<ul style="list-style-type: none"> High temperature and humidity Radiant heat sources Contact with hot objects Direct sun exposure (with no shade) Limited air movement (no breeze, wind or ventilation)
Job-Specific	<ul style="list-style-type: none"> Physical exertion Use of bulky or non-breathable protective clothing and equipment

Workers who are suddenly exposed to working in a hot environment face additional, but generally avoidable hazards to their safety and health. New workers and those returning from time away are especially vulnerable. That's why it is important to prepare for the heat: educate workers about the dangers of heat, and acclimatize workers by gradually increasing the workload or providing more frequent breaks to help new workers and those returning to a job after time away build up a tolerance for hot conditions.

How do I know if it's too hot?

- The temperature rises
- Humidity increases
- The sun gets stronger
- There is no air movement
- No controls are in place to reduce the impacts of equipment that radiates heat
- Protective clothing or gear is worn
- Work is strenuous
- The heat index, which takes both temperature and humidity into account, is a useful tool for outdoor workers and employers (see [Using the Heat Index: A Guide for Employers](#)).

How can heat-related illness be prevented?

Heat-related illnesses can be prevented. Important ways to reduce heat exposure and the risk of heat-related illness include [engineering controls](#), such as air conditioning and ventilation, that make the work environment cooler, and [work practices](#) such as work/rest cycles, drinking water often, and

providing an opportunity for workers to build up a level of tolerance to working in the heat. Employers should include these prevention steps in worksite [training](#) and plans. Also, it's important to know and look out for the [symptoms](#) of heat-related illness in yourself and others during hot weather. Plan for an emergency and know what to do — **acting quickly can save lives!**

>> Go to [Prevention](#)

Heat Index	Risk Level	Protective Measures
Less than 91°F	Lower (Caution)	Basic heat safety and planning
91°F to 103°F	Moderate	Implement precautions and heighten awareness
103°F to 115°F	High	Additional precautions to protect workers
Greater than 115°F	Very High to Extreme	Triggers even more aggressive protective measures

This article was taken from the OSHA website. For more information on this topic, visit www.osha.gov. Please share this information with your employees.

Events & Workshops

EVENTS/WORKSHOPS OFFERED BY THE LOUISIANA SMALL BUSINESS DEVELOPMENT CENTERS:

On Demand

[Five Steps to Secure Financing](#) [Register](#)

On Demand, available until September 30

Topic: Financing and Capital

In this self-paced training video, you will learn the five key steps to financing your small business. After completing this series, you will gain a better understanding of financial planning and assessment, credit and collateral, sources of funding and pitching your business idea. Click the registration link below to get started!

Speaker: Speaker(s): Mike Pennison, Senior Business Consultant

Location: [Louisiana Small Business Development Center, Online](#)

Fee: \$ 25.00

[How to Start a Business](#) [Register](#)

On Demand, available until September 30

Topic: Start-up Assistance

This course will introduce you to the basics of creating and financing a successful business. You will learn to evaluate your ideas, choose the best financing options and legally register your business. The course will point you to the resources you need on your entrepreneurial journey. Click the registration link below to get started.

Speaker: Carmen Sunda, Small Business Expert

Location: [Louisiana Small Business Development Center, Online](#)

Fee: \$ 25.00

[Create a Winning Sales Strategy](#) [Register](#)

On Demand, available until October 01

Topic: Marketing and Sales

Good relationship skills, strategic planning and product expertise all contribute to effective selling. In Creating a Winning Sales strategy, you will learn practical solutions for profitable sales growth. Click the registration link below to get started.

Speaker: Speaker(s): Presented by Erik Waters, Business Consultant

Location: [Louisiana Small Business Development Center, Online](#)

Fee: \$ 25.00

(Events & Workshops Continued)

September

[Starting & Financing Your Business](#) [Register](#)

Wednesday, September 06, 2017 10:00 AM to 11:30 AM

Topic: Start-up Assistance

This seminar will provide entrepreneurs with a comprehensive overview of the steps to be taken to start a business, the essentials of business planning, and how to determine funding needs for the start-up. Seminar covers: • Items you want to know before starting a business • Preparing for business success • How to start your business • Financing options • Resources for your business

Speaker: Erik David Waters, Business Consultant

Location: [Xavier South Conference Room, Room 320, New Orleans](#)

[Securing Business Financing in 5 Steps](#) [Register](#)

Wednesday, September 06, 2017 1:00 PM to 3:00 PM

Topic: Financing and Capital

Identifying and securing the financing you need to grow your business can be a scary and difficult task when you don't know what to do. A winning funding proposal can make a huge difference between getting "No" and getting a "Yes"! In this seminar you will learn what you need and what to do before approaching a lender to finance your business's funding needs. When you know what a lender is looking for and the questions the lender needs answered, you will greatly improve your chances of obtaining the financing that your business needs to start, grow and expand! In this seminar, you will learn: · To identify and assess the financial needs of your business · To identify

sources of capital · How to prepare the essential documents for a lender or investor · How to answer the key questions lenders ask You should attend this workshop if you are a business owner: · Who is seeking financing to start or expand their business · Who has been told by a lender to develop projections and a business plan before applying for the loan · Who has been declined for a loan by a bank

Speaker: Jimmy Nguyen, Business Consultant

Location: [Fletcher Technical Community College Houma Campus, Houma](#)

[SEBD Certification - Certification to Grow Your Business](#) [Register](#)

Thursday, September 07, 2017 5:30 PM to 7:30 PM

Topic: Managing a Business

Learn how your business can benefit from CERTIFICATION as a Louisiana SMALL AND EMERGING BUSINESS. Benefits of free SEBD Certification include: Business developmental assistance, entrepreneurial training, marketing, computer skills, accounting, industry-specific assistance and increased procurement opportunities. Learn more about SEBD and other business certification programs. Plan now to attend this free seminar.

Speaker: Wayne Aucoin

Location: [South Central Louisiana Technical College: River Parishes Campus, St. John Parish Business Training Center, Reserve](#)

(Events & Workshops Continued)

Starting & Financing A Small Business

Friday, September 08, 2017 10:00 AM to 12:00 PM

Topic: Start-up Assistance

This workshop is recommended for those interested in starting a business. At the end of this workshop, you will have a thorough understanding of the process of starting a business and will be able to implement a required checklist to start your business. The following topics will be discussed during this workshop: determining the feasibility of a business idea, planning to start a small business, required licenses, writing a business plan, sources of funds for start-up, expansion and small business resources. Please feel free to bring laptops!

Speaker: Ada Womack

Location: [Louisiana Technology Park, Baton Rouge](#)

Sales and Use Tax Seminar - Natchitoches [Register](#)

Tuesday, September 12, 2017 1:00 PM to 3:30 PM

Topic: Not Set

They will discuss topics that will assist you in basic sales and use tax, and how to calculate sales tax. The seminar will be held at the Municipal Building , 560 2nd Street, Natchitoches, LA 71457.

Speaker: Dana Cawthon, SBDC Regional Director; David Humphries, Assistant Tax Administrator for Rapides Parish; and Jerry McWherter, Tax Administrator for Natchitoches Parish.

Location: [LSBDC Northwest & Central Region - Natchitoches, Municipal Building, Natchitoches](#)

Government Contracting 105: Proposals - Part II Alexandria [Register](#)

Wednesday, September 13, 2017 10:00 AM to 12:00 PM

Topic: Government Contracting

The Northwest Central Louisiana Small Business Development Center (LSBDC) and the Louisiana Government Procurement Technical Assistance Center (PTAC) are co-sponsoring a Government Contracting seminar to educate Louisiana business owners on Wednesday, September 13, at the Cenla Chamber of Commerce in Alexandria, 118 Third St. Jane Kulick, Procurement Counselor at PTAC is the lead presenter at this informative seminar which will include an in depth discussion of how to submit technical and cost proposals in response to more complex procurements where award is based on technical factors and cost is a secondary factor. Concentration will be given on how to read, interpret and address the technical evaluation factors which will be used by the buying agency to determine who gets the award(s).

Speaker: will be Amy Jones, Business Consultant for the Northwest & Central Region Small Business Development Center and Jane Kulick, Counselor Coordinator at the Procurement Technical Assistance Center.

Location: [LSBDC Northwest & Central Region- Cenla Chamber of Commerce - Alexandria, Cenla Chamber of Commerce, Alexandria, LA.](#)

(Events & Workshops Continued)

[SEBD Certification - Certification to Grow Your Business](#) [Register](#)

Wednesday, September 13, 2017 10:00 AM to 12:00 PM

Topic: Managing a Business

Business Certifications give businesses access to opportunity in contracting, funding and grant programs. There are a variety of federal, state and local certification programs that can enhance your chances to not only get a contract but also to expand and grow! Learn how your business can benefit from CERTIFICATION as a Louisiana SMALL AND EMERGING BUSINESS. Benefits of free SEBD Certification include: Business developmental assistance, entrepreneurial training, marketing, computer skills, accounting, industry-specific assistance and increased procurement opportunities. Learn more about SEBD and other business certification programs. Plan now to attend this free seminar.

Speaker: Tina Langlois, MPH, MBA - LSBDC Business Consultant

Location: [Delgado Community College, H. Giles Martin Hall, New Orleans, LA](#)

[Starting & Financing Your Business](#) [Register](#)

Wednesday, September 13, 2017 10:00 AM to 12:00 PM

Topic: Start-up Assistance

This seminar will provide entrepreneurs with a comprehensive overview of the steps to be taken to start a business, the essentials of business planning, and how to determine funding needs for the start-up. Seminar covers: • Items you want to know before starting a business • Preparing for business success • How to start your business • Financing options • Resources for your business

Speaker: Jimmy Nguyen, LSBDC Business Consultant

Location: [Fletcher Technical Community College Houma Campus, Houma](#)

[Steps for Starting Your Food Business](#) [Register](#)

Wednesday, September 13, 2017 11:30 AM to 1:30 PM

Topic: Start-up Assistance

Bring Your Lunch and Learn! Ever wanted to open your own restaurant, catering business, food kiosk or truck? Get a quick overview of how to start your foodservice business with Dianne F. Sclafani, Culinary and Foodservice Business Development Consultant! Learn about the following: - What is needed to set up an approved food business in the New Orleans Area - General Registering, Licenses, Permits, Certifications - Location, Customers and Sales - Preparing For Funding Register today to begin your dream foodservice business plan for success!

Speaker: Dianne F. Sclafani, Culinary & Foodservice Business Development Consultant

Location: [LiftFund, Metairie](#)

(Events & Workshops Continued)

[Business Planning for Entrepreneurs](#) [Register](#)

Wednesday, September 13, 2017 4:30 PM to 6:30 PM

Topic: Business Plan

This seminar is for aspiring entrepreneurs and new ventures. A business plan is much more than a piece of paper. It is your roadmap to success. The plan forces you to consider your entire business at once, and therefore maintain consistency in planning and execution of your business model. A comprehensive, focused, well written business plan enables you to control your business and its potential for success. This seminar covers the detailed parts of a thorough business plan. Topics Covered: • What is a Business Plan and what is it used for? • Full Business Plan Planner Workbook • Worksheets for Financial Projections

Speaker: Mike Pennison, Business Consultant

Location: [Xavier University, Xavier South Rm. 402E, New Orleans](#)

[Sales and Use Tax Seminar - Shreveport](#) [Register](#)

Thursday, September 14, 2017 12:30 PM to 3:00 PM

Topic: Not Set

They will discuss topics that will assist you in basic sales and use tax, and how to calculate sales tax. Seminar will be held at the Greater Shreveport Chamber of Commerce, 400 Edwards Street, Shreveport, LA 71101.

Speaker: Dana Cawthon, SBDC Regional Director; Gail Howell, Administrator Caddo/Shreveport Sales & Use Tax Commission and Phillip Jackson, Sales & Use Tax Audit Manager Caddo/Shreveport Sales & Use Tax Commission

Location: [LSBDC Northwest & Central Region-Greater Shreveport Chamber of Commerce, Greater Shreveport Chamber of Commerce, Shreveport](#)

[Starting & Financing a Small Business: Using Sasol's Small Business Resource Guide](#) [Register](#)

Thursday, September 14, 2017 4:00 PM to 6:00 PM

Topic: Start-up Assistance

This workshop is highly recommended for all individuals interested in determining the feasibility of their business idea, planning to start or have recently started a small business, seeking a small business loan, or wanting to learn more about business planning. Topics of discussion will include entrepreneurship readiness, writing a business plan, sources of funds for start-up and expansion, and small business resources. Please register online at www.lsbdc.org/msu under Training, call 337-475-5529, or email us at lsbdc.msu@lsbdc.org so that we can prepare for your attendance.

Speaker: Susan Thibodeaux, Business Consultant

Location: [LSBDC at McNeese State University: Main Office, SEED Center, *Lake Charles](#)

Fee: \$ 10.00

(Events & Workshops Continued)

[Starting and Financing A Small Business](#) [Register](#)

Tuesday, September 19, 2017 5:30 PM to 7:30 PM

Topic: Start-up Assistance

This workshop is highly recommended for all individuals interested in determining the feasibility of their business idea, planning to start or have just started a small business, expanding their business, seeking a small business loan, or wanting to learn more about planning. Topics of discussion will include business feasibility, business planning, sources of funds for start-up and expansion, small business resources, and required licenses.

Location: [LSBDC Training at University of Louisiana, Stubbs Hall Room 117, Monroe](#)

[The Importance of Small Businesses Focusing On Human Resources - Alexandria](#) [Register](#)

Wednesday, September 20, 2017 9:30 AM to 12:00 PM

Topic: Human Resources

"Why Small Businesses Need to Focus on Human Resources" As a small business owner, you probably have a lengthy to-do list and are used to wearing many hats. Managing people and human resource operations aren't top on your list. Many small business owners often put human resource task on the back burner after hiring the right talent because business operations are running smoothly as usual. However, doing so is putting your business and employees at risk for legal and compliance issues. Human Resources management is just one of the important things you do not want to leave off your to-do list. Join us to discuss the latest in HR trends, make sure you are staying compliant and work on improving people management skills.

Speaker: Amy Jones, Business Consultant for the

NWCR LSBDC and Lydia Lambert, PHR, SHRM -CP, Owner of Geaux HR Consulting

Location: [LSBDC Northwest & Central Region-Cenla Chamber of Commerce - Alexandria, Cenla Chamber of Commerce, Alexandria, LA.](#)

[Starting & Financing Your Business](#) [Register](#)

Wednesday, September 20, 2017 9:30 AM to 12:00 PM

Topic: Start-up Assistance

This seminar will provide entrepreneurs with a comprehensive overview of the steps to be taken to start a business, the essentials of business planning, and how to determine funding needs for the start-up. Seminar covers: • Items you want to know before starting a business • Preparing for business success • How to start your business • Financing options • Resources for your business

Speaker: Tina Langlois, MPH, MBA - LSBDC Business Consultant

Location: [Delgado Community College City Park Campus, H. Giles Martin Hall Room # 102](#)

(Events & Workshops Continued)

[Accounting 101](#) [Register](#)

Wednesday, September 20, 2017 10:00 AM to 12:00 PM

Topic: Business Accounting

As a business owner, your knowledge of the financial data process and how to use this information to make sound business decisions will be greatly improved by attending this workshop. If you want to understand what your business numbers really mean, then “Accounting 101 for Small Businesses” workshop is for you. This class will look at the basis for understanding accounting, the financial statements, and how they can help you with your business.

Speaker: Mike Crochet, Accounting Specialist

Location: [South Regional Library, Auditorium, Lafayette](#)

[Women-Owned Small Business Certification](#) [Register](#)

Wednesday, September 20, 2017 10:00 AM to 12:00 PM

Topic: Government Contracting

Women-owned small businesses can begin taking steps to participate in the federal contracting program. At the end of this session, you will have a thorough understanding of the requirements for certification. For more information on Women-Owned Small Business Certification, visit www.sba.gov/wosb.

Speaker: SBA Representative

Location: [Louisiana Technology Park, Baton Rouge](#)

[Branding Your Business On the Net... Using Social Media, Your Website & SEO](#) [Register](#)

Wednesday, September 20, 2017 11:00 AM to 1:00 PM

Topic: Marketing and Sales

Your brand is your key to being recognized in a sea of competitors. How you present yourself via digital media is a crucial part of your business’ marketing strategy. As more and more people gravitate towards the Internet to do business, it is important to stake your claim in this new territory and get your brand out there. “Internet Brand Basics” takes a look at how you can use your Website Content, Social Media, Search Engine Optimization and various other tools to market your brand online. This class will give you an overview of how the Internet can increase sales through recognition of your brand as a provider of products or solutions. We will cover why content is important, how social media can generate sales, what search optimization is and how you can bring your business online with little or no cost, aside from your time. "Internet Brand Basics" is the starting point for growing your business’ presence in a growing digital world.

Speaker: Erik Waters, Business Consultant

Location: [Xavier South Conference Room, Room 320, New Orleans](#)

(Events & Workshops Continued)

[Starting & Financing a Small Business - Alexandria](#) [Register](#)

Wednesday, September 20, 2017 2:00 PM to 4:00 PM

Topic: Start-up Assistance

This free workshop is highly recommended for all individuals interested in determining the feasibility of their business idea, planning to start or have recently started a small business, seeking a small business loan, or wanting to learn more about business planning. Topics of discussion will include; entrepreneurship readiness, writing a business plan, sources of funds for start-up and expansion, small business resources, bookkeeping and completing paperwork for small business start-ups.

Speaker: Amy Jones, Business Consultant of the LSBDC NWCR

Location: [LSBDC Northwest & Central Region-Cenla Chamber of Commerce - Alexandria, Cenla Chamber of Commerce, Alexandria, LA.](#)

[The Changing Workplace - HR Fundamentals for Business - Covington](#) [Register](#)

Thursday, September 21, 2017 8:30 AM to 12:00 PM

Topic: Managing Employees

This workshop will provide local business owners with awareness and understanding of best practices in development of policies in managing employees use of social media in today's changing workplace.

Speaker: Louisiana SBDC at Southeastern Louisiana University Parish President Pat Brister Society for Human Resource Management City Councilman Larry Rolling, District D Labor Attorney Michael Bush SCORE Brad Schroeder, CBA

Location: [. Greater Covington Center, Covington](#)

Letting of 9/13/2017

For more information on lettings or to download construction documents, visit: <http://wwwapps.dotd.la.gov/engineering/lettings/>

Proposal: H.004721.6 TCHOUPITOULAS SIGNAGE AND STRIPING PLAN

SBE Goal: 4%

Specbook: 2016

Description of work: raised pavement markers, plastic pavement striping, traffic signs, and related work.

Parish(es): Orleans

Federal Number: H004721

Estimated Construction Cost: \$250,000 to \$500,000

Construction Proposal Documents

Proposal: H.005733.6 US 190 SUPERSTREET

DBE Goal: 10%

OJT Goal: 1 Trainees

Specbook: 2016

Description of work: clearing and grubbing, class ii base course, lime treatment, drainage structures, drilled shaft foundations, traffic signalization, milling asphalt pavement, asphalt concrete pavement, portland cement concrete pavement, landscaping, and related work.

Parish(es): St. Tammany

Route(s): US 190

Federal Number: H005733

Estimated Construction Cost: \$7,500,000 to \$10,000,000

Construction Proposal Documents

Proposal: H.007534.6 LIVONIA SIGNAGE ENHANCEMENT PROJECT

Local Public Agency project

Specbook: 2006

Description of work: signage (with or without internal lighting), landscaping, irrigation installation and related work.

Parish(es): Pointe Coupee

Route(s): LA 411; LA 77; LA 78; LA 81; US 190

Federal Number: H007534

Estimated Construction Cost: \$100,000 to \$250,000

Construction Proposal Documents

Proposal: H.008046.6 LA 3152: CLEARVIEW OPERATIONAL IMPROV.

DBE Goal: 7%

Specbook: 2006

ASPHALT PILOT PROJECT This project has been selected as an Asphalt Pilot Project. Special provisions governing asphalt requirements can be found in the construction proposal section titled 2015 ASPHALT PILOT SPECIAL PROVISION.

Description of work: grading, drainage structures, milling asphalt concrete, milling concrete pavement, pavement patching, class ii base course, asphalt concrete pavement, and related work.

Parish(es): Jefferson

Route(s): LA 3152

Federal Number: H008046

Estimated Construction Cost: \$1,000,000 to \$2,500,000

Construction Proposal Documents

(Lettings Continued)

Proposal: H.009575.6 I-20: TX S/L - 0.44 MI E OF MONKHOUSE DR.

DBE Goal: 5%

OJT Goal: 1 Trainees

Specbook: 2016

Description of work: milling asphalt concrete, class ii base course, lime treatment, pavement patching, asphalt concrete overlay, and related work.

Parish(es): Caddo

Route(s): I-20

Federal Number: H009575

Estimated Construction Cost: \$15,000,000 to \$20,000,000

Construction Proposal Documents

Proposal: H.009639.6 LA 343: LA 342 - 1.0 MI N LA 342

DBE Goal: 6%

Specbook: 2016

Description of work: clearing and grubbing, drainage structures, pavement patching, class ii base course, lime treatment, in-place cement stabilized base course, asphalt concrete overlay, and related work.

Parish(es): Lafayette

Route(s): LA 343

Federal Number: H009639

Estimated Construction Cost: \$1,000,000 to \$2,500,000

Construction Proposal Documents

Proposal: H.010214.6 US 71: LA 10 - AVOYELLES P/L

DBE Goal: 5%

OJT Goal: 3 Trainees

Specbook: 2016

Description of work: drainage structures, lime treatment, in-place cement stabilized base course, pavement patching, milling asphalt pavement, asphalt surface treatment, asphalt concrete overlay, and related work.

Parish(es): St. Landry

Route(s): US 71

Federal Number: H010214

Estimated Construction Cost: \$7,500,000 to \$10,000,000

Construction Proposal Documents

Proposal: H.010290.6 LA 796: LA 508 TO LA 155

Specbook: 2016

Description of work: drainage structures, milling asphalt concrete, in-place cement treated base course, asphalt concrete pavement, and related work.

Parish(es): Bienville

Route(s): LA 796

Federal Number: H010290

Estimated Construction Cost: \$1,000,000 to \$2,500,000

Construction Proposal Documents

(Lettings Continued)

Proposal: H.010457.6 US 80: LA 133 TO US 425

DBE Goal: 5%

Specbook: 2016

Description of work: clearing and grubbing, milling asphalt pavement, pavement patching, asphalt concrete overlay, and related work.

Parish(es): Richland

Route(s): US 80

Federal Number: H010457

Estimated Construction Cost: \$2,500,000 to \$5,000,000

Construction Proposal Documents

Proposal: H.011276.6-R1 N.O. AIRPORT CONNECTOR ROAD

DBE Goal: 13%

OJT Goal: 2 Trainees

Specbook: 2006

ASPHALT PILOT PROJECT This project has been selected as an Asphalt Pilot Project. Special provisions governing asphalt requirements can be found in the construction proposal section titled 2015 ASPHALT PILOT SPECIAL PROVISION.

Description of work: clearing & grubbing, grading, nonplastic embankment (sand) (surcharge), class ii base course, portland cement concrete pavement, asphalt concrete pavement, milling asphalt pavement, pavement patching, drainage structures, lighting, traffic signalization, drilled shaft foundations, noise reduction systems, waterlines and related work.

Parish(es): Jefferson

Route(s): AIRPORT ACCESS RD.; I-10 WB OFF RAMP; LOYOLA DR.; VETERANS BLVD.

Federal Number: H011276

Estimated Construction Cost: \$5,000,000 to \$7,500,000

Construction Proposal Documents

Proposal: H.011295.6 LA 73 (GOVT ST) EAST BLVD - LOBDELL AVE

DBE Goal: 15%

OJT Goal: 1 Trainees

Specbook: 2016

Description of work: clearing and grubbing, grading, drainage structures, milling asphalt pavement, pavement patching, subgrade treatment, class ii base course, asphalt concrete pavement, cleaning and resealing existing joints, incidental concrete pavement, landscaping, traffic signalization, and related work.

Parish(es): East Baton Rouge

Route(s): LA 73

Federal Number: H011295

Estimated Construction Cost: \$10,000,000 to \$15,000,000

Construction Proposal Documents

Proposal: H.011421.6 LA 3032: LT TURN LANES AT CAMILLA DR

DBE Goal: 10%

Specbook: 2016

Description of work: grading, drainage structures, lime treatment, class ii base course, portland cement concrete pavement, drilled shaft foundations, traffic signalization, and related work.

Parish(es): Caddo

Route(s): LA 3032

Federal Number: H011421

Estimated Construction Cost: \$500,000 to \$1,000,000

Construction Proposal Documents

(Lettings Continued)

Proposal: H.011754.6 CITY OF ALEXANDRIA STREET IMPROVEMENTS PHASE 2

Local Public Agency project

DBE Goal: 6%

Specbook: 2006

Description of work: grading, pavement patching, class ii base course (stone), and related work.

Parish(es): Rapides

Federal Number: H011754

Estimated Construction Cost: \$2,500,000 to \$5,000,000

Construction Proposal Documents

Proposal: H.011766.6 BRIDGE REPAIRS-BEARING REHAB DECK JNT SPALL, & CLEAN & PAINT

DBE Goal: 5%

Specbook: 2016

Description of work: cleaning and painting, precast prestressed concrete girder spans bridge, bridge repairs and related work.

Parish(es): District 05

Route(s): I-20, LA 145, US 165; LA 546, LA 151

Federal Number: H011766

Estimated Construction Cost: \$10,000,000 to \$15,000,000

Construction Proposal Documents

Proposal: H.011790.6-R1 RIVER ROAD NORTH OVERLAY

Local Public Agency project

DBE Goal: 9%

Specbook: 2006

ASPHALT PILOT PROJECT This project has been selected as an Asphalt Pilot Project. Special provisions governing asphalt requirements can be found in the construction proposal section titled 2015 ASPHALT PILOT SPECIAL PROVISION.

Description of work: clearing and grubbing, pavement patching, asphaltic concrete overlay, milling asphaltic concrete and related work.

Parish(es): Livingston

Federal Number: H011790

Estimated Construction Cost: \$500,000 to \$1,000,000

Construction Proposal Documents

Proposal: H.011926.6 I-10 & I-59: MEDIAN CABLE BARRIER

DBE Goal: 6%

OJT Goal: 3 Trainees

Specbook: 2016

Description of work: grading, high tension cable barrier, concrete strip, and related work.

Parish(es): St. Tammany

Route(s): I-10; I-59

Federal Number: H011926

Estimated Construction Cost: \$2,500,000 to \$5,000,000

Construction Proposal Documents

(Lettings Continued)

Proposal: H.012101.6 LA 530: LA 1 TO LA 538

SBE Goal: 3%

Specbook: 2016

Description of work: pavement patching, milling asphalt pavement, asphalt concrete pavement, and related work.

Parish(es): Caddo

Route(s): LA 530

Federal Number: H012101

Estimated Construction Cost: \$250,000 to \$500,000

Construction Proposal Documents

Proposal: H.012124.6 DISTRICT 04: DISTRICTWIDE AST

DBE Goal: 2%

OJT Goal: 2 Trainees

Specbook: 2016

Description of work: milling asphalt pavement, pavement patching, asphalt surface treatment, thin asphalt concrete, and related items.

Parish(es): Bossier; Caddo; Desoto

Route(s): LA 157; LA 169; LA 175; LA 538

Federal Number: H012124

Estimated Construction Cost: \$500,000 to \$1,000,000

Construction Proposal Documents

Proposal: H.012155.6 LA 1231-2: CROSS DRAIN REPLACE (WF)

SBE Goal: 4%

Specbook: 2016

Description of work: drainage structures, pavement patching, and related work.

Parish(es): Winn

Route(s): LA 1231-2

Federal Number: H012155

Estimated Construction Cost: \$100,000 to \$250,000

Construction Proposal Documents

Proposal: H.012162.6 US 11: FLOODWALL - IST IRISH BAYOU BR

DBE Goal: 8%

Specbook: 2016

Description of work: milling asphalt pavement, pavement patching, asphalt concrete overlay, and related work.

Parish(es): Orleans

Route(s): US 11

Federal Number: H012162

Estimated Construction Cost: \$500,000 to \$1,000,000

Construction Proposal Documents

(Lettings Continued)

Proposal: H.012555.6 LA 367: LA 370 - US 190

DBE Goal: 2%

Specbook: 2016

Description of work: milling asphalt pavement, pavement patching, thin asphalt concrete overlay, and related work.

Parish(es): Acadia; St. Landry

Route(s): LA 367

Federal Number: H012555

Estimated Construction Cost: \$500,000 to \$1,000,000

Construction Proposal Documents

Proposal: H.012583.6 LA 377: LA 26 - LA 112

DBE Goal: 1%

Specbook: 2016

Description of work: micro-surfacing asphalt pavement and related work.

Parish(es): Allen

Route(s): LA 377

Federal Number: H012583

Estimated Construction Cost: \$500,000 to \$1,000,000

Construction Proposal Documents

Proposal: H.012584.6 LA 397: LINCOLN RD - LA 14

SBE Goal: 1%

Specbook: 2016

Description of work: micro-surfacing aggregate, micro-surfacing asphalt and related work.

Parish(es): Beauregard

Route(s): LA 397

Federal Number: H012584

Estimated Construction Cost: \$250,000 to \$500,000

Construction Proposal Documents

Proposal: H.012840.6 LA 19: I-110 - S CANAL BAYOU

DBE Goal: 5%

Specbook: 2016

Description of work: grading, drainage structures, milling asphalt pavement, pavement patching, asphalt concrete overlay, portland cement concrete pavement, and related work.

Parish(es): East Baton Rouge

Route(s): LA 19

Federal Number: H012840

Estimated Construction Cost: \$2,500,000 to \$5,000,000

Construction Proposal Documents

Proposal: H.012904.6 I-610: PAVEMENT MARKING REPLACEMENT I

SBE Goal: 4%

Specbook: 2016

Description of work: raised pavement markers, plastic pavement striping, and related work.

Parish(es): Orleans

Route(s): I-610

Federal Number: H012904

Estimated Construction Cost: \$250,000 to \$500,000

Construction Proposal Documents

(Lettings Continued)

**Proposal: H.012905.6 I-49: PAVEMENT
MARKING REPLACEMENT III**

DBE Goal: 2%

Specbook: 2016

Description of work: removal and replacement of
pavement markings.

Parish(es): St. Landry

Route(s): I-49

Federal Number: H012905

Estimated Construction Cost: \$500,000 to \$1,000,000

Construction Proposal Documents

Bid Results for the Letting of 8-9-2017

The CS-6AAA Form and Attachments for all DBE Goal Projects are due on Monday, August 14, 2017, prepared and submitted as provided in the Proposal. Questions regarding the CS6AAA Form and Attachments can be directed to the Compliance Programs Office at 225-379-1382 .

H.001308.6 LA 31: LA 350 - LA 351
GRADING, DRAINAGE STRUCTURES, CLASS II BASE COURSE, ASPHALT PAVEMENT PATCHING, MILLING ASPHALT PAVEMENT, ASPHALT CONCRETE OVERLAY, AND RELATED WORK.
Parish(es): St. Martin
Route(s): LA 31
Estimated Construction Cost: \$3,179,294.84

Apparent Low Bidder:
COASTAL BRIDGE CO., L.L.C.
PO BOX 14715
BATON ROUGE, LA 70898
(225)766-0244
\$2,784,051.43

H.009720.6 (SBE Goal Project) LA 1250: PINEVILLE URBAN STREETSCAPING
CLEARING AND GRUBBING, GRADING, DRAINAGE STRUCTURES, ASPHALT CONCRETE PAVEMENT, PORTLAND CEMENT CONCRETE, LANDSCAPING, RETAINING WALL, AND RELATED WORK.
OJT Goal: 0 Hours
Parish(es): Rapides
Route(s): LA 1250
Federal Number: H009720
Estimated Construction Cost: \$299,622.84

Apparent Low Bidder:
Progressive Construction Co., LLC
PO BOX 11594
ALEXANDRIA, LA 71315-1594
(318)473-9522
\$357,472.02

H.009956.6 (DBE Goal Project) LA 44: TURN LANES CLEARING AND GRUBBING, GRADING, DRAINAGE STRUCTURES, MILLING ASPHALT PAVEMENT, PAVEMENT PATCHING, CLASS II BASE COURSE, LIME TREATMENT, PORTLAND CEMENT CONCRETE PAVEMENT, ASPHALT CONCRETE PAVEMENT, DRILLED SHAFT FOUNDATIONS, TRAFFIC SIGNALIZATION, AND RELATED WORK.
OJT Goal: 3 Trainees
Parish(es): Ascension
Route(s): LA 44, LA 621, LA 931, LA 933
Federal Number: H009956
Estimated Construction Cost: \$3,498,619.00

Apparent Low Bidder:
KCR CONTRACTORS, LLC
13131 Hwy. 603, Suite 105
Bay Saint Louis, MS 39520
(228)220-0011
\$3,501,304.95

H.010648.6 (DBE Goal Project) ACADIAN THRUWAY / N. ACADIAN THRUWAY OVLY
MILLING ASPHALT PAVEMENT, PAVEMENT PATCHING, ASPHALT CONCRETE OVERLAY, AND RELATED WORK.
Parish(es): East Baton Rouge
Federal Number: H010648
Estimated Construction Cost: \$3,881,205.60

Apparent Low Bidder:
Forby Contracting, Inc.
34363 SWEDE ALLEY
HINCKLEY, MN 55037
(320)384-6061
\$2,885,999.45

(Bid Results Continued)

H.011548.6 (SBE Goal Project) LA 48: LOWERLINE ST. - PROSPECT AVE.
DRAINAGE STRUCTURES, MILLING ASPHALT PAVEMENT, PAVEMENT PATCHING, ASPHALT CONCRETE OVERLAY, AND RELATED WORK.
Parish(es): St. Charles
Route(s): LA 48
Federal Number: H011548
Estimated Construction Cost: \$366,183.80

Apparent Low Bidder:
Hard Rock Construction LLC
2305 L & A ROAD
METAIRIE, LA 70001
(504)835-1050
\$347,261.42

H.012141.6 (DBE Goal Project) LA 471 & LA 122: US 71 - WINN PL
DRAINAGE STRUCTURES, MILLING ASPHALT PAVEMENT, PAVEMENT PATCHING, IN-PLACE CEMENT TREATED BASE COURSE, ASPHALT CONCRETE PAVEMENT, AND RELATED WORK.
OJT Goal: 1 Trainees
Parish(es): Grant
Route(s): LA 471, LA 471 & LA 122
Federal Number: H012141
Estimated Construction Cost: \$3,345,129.29

Apparent Low Bidder:
Madden Contracting Co., LLC
PO BOX 856
MINDEN, LA 71058
(318)377-0928
\$2,680,872.28

H.012198.6 (DBE Goal Project) US 165: GRANT P/L - LA 506
MILLING ASPHALT CONCRETE, PAVEMENT PATCHING, ASPHALT CONCRETE OVERLAY, AND RELATED WORK.
Parish(es): Caldwell, LaSalle
Route(s): US 165
Federal Number: H012198
Estimated Construction Cost: \$3,457,087.10

Apparent Low Bidder:
Diamond B Construction Co., L.L.C.
PO BOX 7618
ALEXANDRIA, LA 71306
(318)427-1300
\$2,875,252.91

H.012557.6 (DBE Goal Project) LA 329: LA 14 - AVERY ISLAND
DRAINAGE STRUCTURES, MILLING ASPHALT PAVEMENT, PAVEMENT PATCHING, PAVEMENT WIDENING, THIN ASPHALT OVERLAY, AND RELATED WORK.
Parish(es): Iberia
Route(s): LA 329
Federal Number: H012557
Estimated Construction Cost: \$1,001,419.63

Apparent Low Bidder:
COASTAL BRIDGE CO., L.L.C.
PO BOX 14715
BATON ROUGE, LA 70898
(225)766-0244
\$967,055.54

(Bid Results Continued)

H.012582.6 (SBE Goal Project) LA 62: LA 438 - MS
STATE LINE
MILLING ASPHALT PAVEMENT, PAVEMENT
PATCHING, THIN ASPHALT CONCRETE OVERLAY,
AND RELATED WORK.
Parish(es): Washington
Route(s): LA 62
Federal Number: H012582
Estimated Construction Cost: \$213,170.23

Apparent Low Bidder:
Barriere Construction Co., LLC.
407 CC ROAD
FRANKLINTON, LA 70438
(985)795-8239
\$241,315.67

FEATURED DBE FIRM



THE CAWTHORNE FINANCIAL GROUP, LLC

*Securities offered through Cambridge Investment
Research, Inc. A Broker/Dealer, Member FINRA/SIPC.*



CFG is an independent financial advisory firm specializing in helping municipalities governmental entities, small to mid-size business owners and retired investors reach their financial goals. We pride ourselves on personal service, flexibility and close attention to detail.

We help clients achieve success!

401 Market Street, Suite 1000
Shreveport, Louisiana 71101
Phone: 318-213-6451

[Www.thecawthornefinancialgroupllc.com](http://www.thecawthornefinancialgroupllc.com)

DOTD encourages safe travel as students prepare to go back to school



BATON ROUGE, La. - As students prepare to start a new school year, the Louisiana Department of Transportation and Development would like to remind motorists, bicyclists and pedestrians to be safe and pay extra attention when traveling on the roadways.

The start of the school year means increased commute times, and that school zone speed limits will be in effect at posted times. Drivers are encouraged to allow for additional commute time, and obey speed limits and school zone signs to ensure the safety of students and the traveling public.

To assist with a safe commute, DOTD has the following resources in place.

- MyDOTD: Motorists can receive information on local projects, lane and road closures, and other DOTD activity by signing up for MyDOTD at www.dotd.la.gov.
- 511 Traveler Information: Travelers can also find information regarding road closures and traffic by visiting www.511la.org or by dialing 511 from their telephone and saying the route or region about which they are seeking information. Out-of-state travelers can access the system by calling 1-888-ROAD-511 (1-888-762-3511).
- Twitter: DOTD has several localized twitter accounts that provide up-to-date travel information. You can sign up to get the latest travel information on road conditions, traffic and ferries via Twitter here: <http://bit.ly/2rQGIV9>
Additionally, be sure to follow DOTD on our social media pages beginning Monday, July 31, until Friday, August 31, as we offer back to school safety tips.

DOTD urges motorists to adhere to the following school zone safety tips:

- Obey all speed limit signs in and around school zones.
- Watch for school buses, and stop for them when their red lights are flashing.
- Be on the lookout for children walking or riding bicycles.
- Don't stop on crosswalks.
- Obey crossing guards on crosswalks.
- Don't be distracted by cellphones or other electronic devices.
- Follow the school's traffic pattern for dropping off and picking up children.

For more information about DOTD's safety-related initiatives, visit www.dotd.la.gov and www.destinationzerodeaths.com.

Newly DBE Certified Firms

Firm Name	OWNER'S NAME	PHONE #	EMAIL ADDRESS
Phalanx Consulting & Solutions	Correy Thomas	(443)910-1800	umtctt@comcast.net
Florida Cleaning System	Yvette Barrios	(407)268-4035	rene@fcsiservices.com
Rely Supply	Ronald Dumas	(513)207-2967	fj18@aol.com
Thomas and Associates	Enice Thomas	(501)960-7802	enicet@aol.com
CAS Group	Jennifer Lindbom	(917)774-7714	lindbom@casgrouppllc.com
CIA Trucking	Albert Smith	(504)415-1425	cds719@gmail.com
Native Ohoyo Construction	Tangee Durke	(337)303-5537	nativeohoyoconstruction@gmail.com
Nexlegacy	Kendrick Whittington	(985)981-8311	kendrick@nexlegacyconstruction.com
BCP Enterprises	Benjamin Phillips	(337)257-1487	bcenterprise11@yahoo.com
Perfection Construction	Alejandro Carillo	(337)7812770	theperfectionconstruction@gmail.com
C. Morrow Tractor Services	Chris Morrow	(337)436-5676	morrowecm@aol.com



LA DOTD DBE Program Contact Information



Stephanie P. Ducote, Compliance Programs Director
(225)379-1363 | stephanie.ducote@la.gov

Remy Graves, DBE/SBE Program Manager
(225)379-1762 | remy.graves@la.gov

Rhonda Wallace, DBE Certification Program Specialist
(504) 376-0233 | rhonda.wallace@la.gov

Kandy Fly, DBE Certification Program Specialist/SBE Program Specialist
(225) 379-1922 | kandy.fly@la.gov

Euphemia Renee' Smith, DBE Certification Program Specialist
(225) 379-1775 | euphemia.smith2@la.gov

Amber White, DBE Contract Administration Program Specialist
(225) 379-1494 | amber.white@la.gov

Carla Murray, DBE Project Investigator
(225) 379-1774 | carla.murray@la.gov

Judy Halloran, DBE Contract Administration Program Specialist
(225) 379-1411 | judy.halloran@la.gov

DBE Supportive Services Staff

Jackie des Bordes, Program Coordinator
Jackie.desBordes@sjbgroup.com

Kenyatta Sparks, Program Assistant
Kenyatta.Sparks@sjbgroup.com

Grace Chatman, Communication Specialist
Grace.Chatman@sjbgroup.com

8377 Picardy Avenue
Baton Rouge, Louisiana 70809
Office: 225.769.3400
Fax: 225.769.3596
Website: www.SJBGroup.com

What can SJB Group do for YOU?

SJB Group, LLC can provide **free assistance** to certified LADOTD DBE firms in the following areas:

- By **preparing company business cards, profile sheets**, and providing information on recommended target areas for your marketing efforts.
- By acting as a **liaison between the DBE Contractor and Prime Contractor** for project information, and in problems occurring on the jobsite.
- By informing of **upcoming LADOTD lettings**, and project information for other agencies throughout the state. SJB can assist you in locating bid tabulation information as well.
- By providing **assistance and guidance** on material takeoffs, bid preparation and estimating, project scheduling, and planning for projects that DBE firms are bidding or plan to bid in the near future.
- By helping with **office computer operations** to include trouble-shooting problems, Internet access and software installation, and basic to technical computer training.
- By **assisting in financial areas** such as loan and bond package preparations, company financial statements, business plan preparation, and SBA 8(a) and Hub-Zone certification packages.